

ELECTRIC STORAGE WATER HEATERS

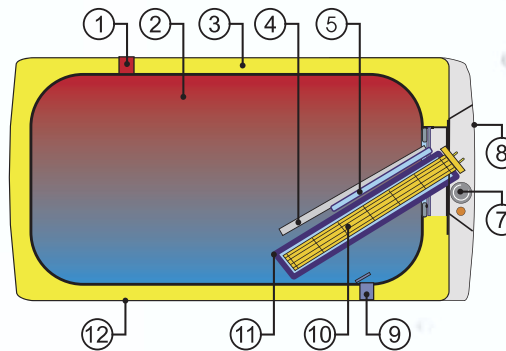
Wall-mounted, horizontal

OKCEV 100, OKCEV 125, OKCEV 160



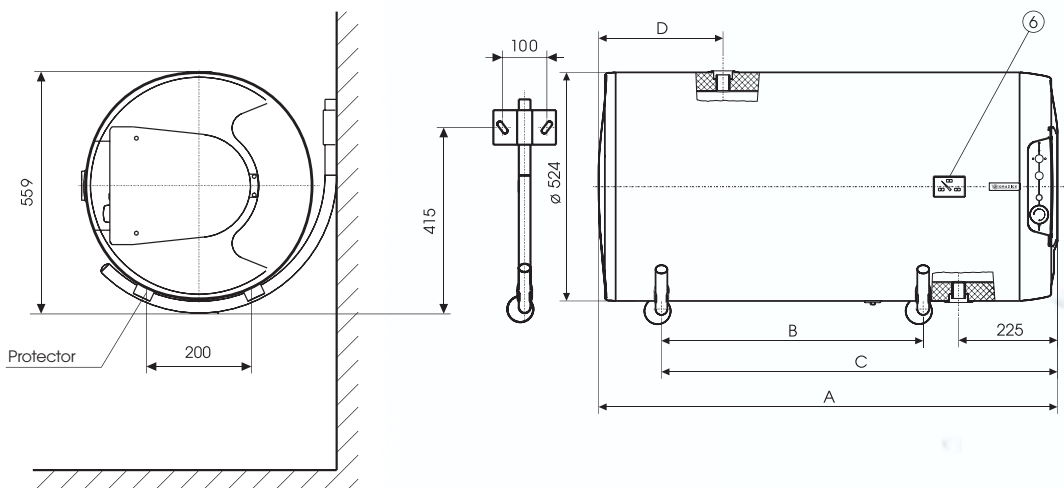
ELECTRIC storage water heater
for horizontal mounting

- 1 Discharge pipe for hot water
- 2 Enamelled steel tank
- 3 Polyurethane CFC-free insulation - 42 mm
- 4 Mg anode
- 5 Holder for operating and safety thermostat
- 6 Temperature indicator
- 7 Operating thermostat with external control
Safety thermostat
- 8 Cover for electrical equipment
- 9 Filling pipe for cold water
- 10 **DRY CERAMIC HEATING ELEMENT**
- 11 Holder for heating element
- 12 Heater casing



Type	OKCEV 100	OKCEV 125	OKCEV 160
A	881	1046	1235
B	450	600	700
C	758	908	1008
D	185	184	230

All inlets and outlets have an internal G 3/4" thread.



Type	OKCEV 100	OKCEV 125	OKCEV 160
Volume (l)	100	125	152
Max. operating overpressure in the tank (MPa)	0.6	0.6	0.6
Voltage (V/Hz)	1 PE-N 230/50	1 PE-N 230/50	1 PE-N 230/50
Connected load (kW)	2	2	2
Electrical protection	IP 44	IP 44	IP 44
Maximum HUW temperature (°C)	80	80	80
Recommended HUW temperature (°C)	60	60	60
Length x Diameter (mm)	881x524	1046x524	1235x524
Maximum weight of heater without water (kg)	41	47	56
Heating period with ele. en. from 10 °C to 60 °C (hour)	3	3.8	5
Heat loss/energy efficiency class (kWh/24 h)	0.88/C	1.09/C	1.39/C